

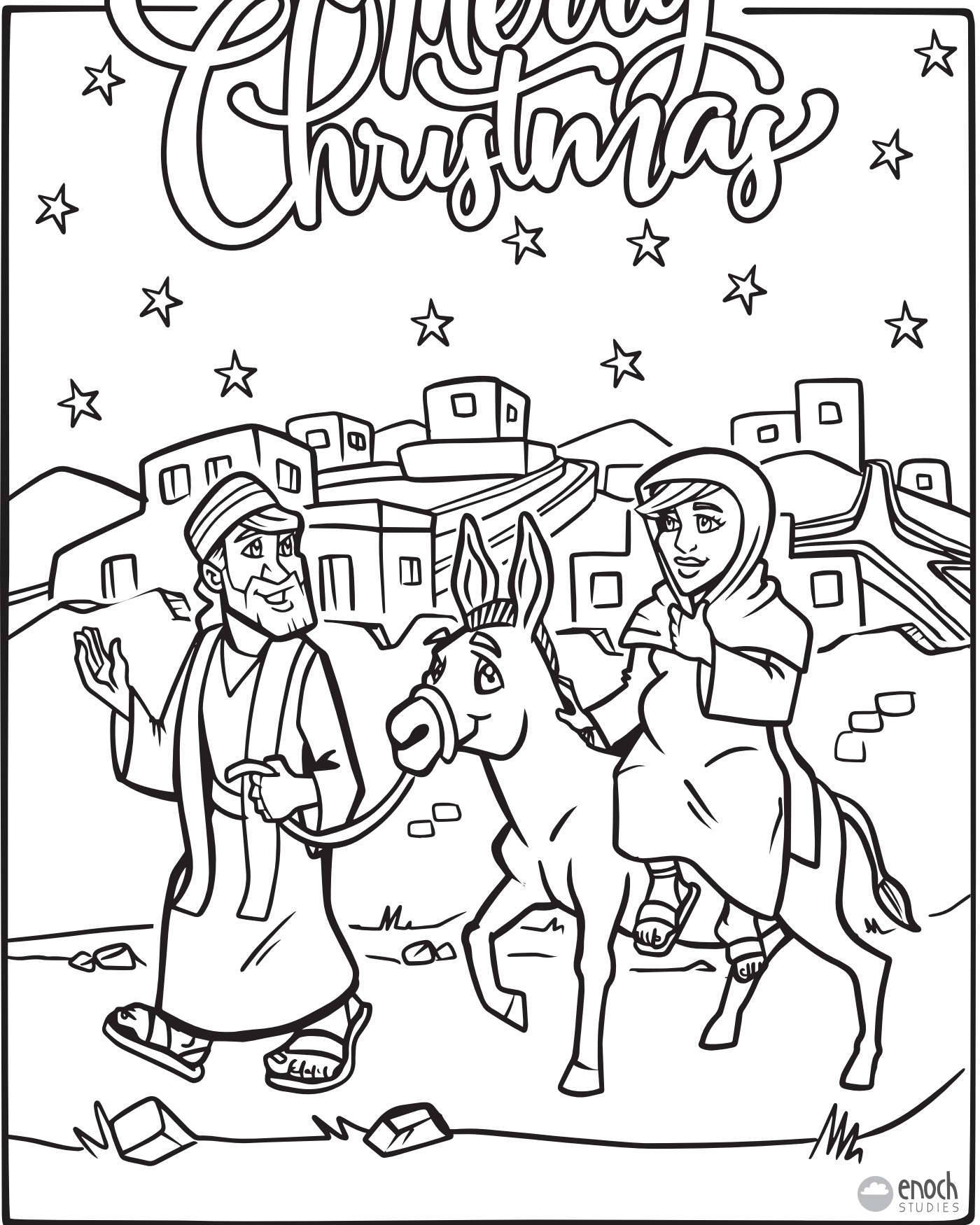
≡ Light &...
Life
to all
He
Brings...



For unto us
a child is born

Isaiah 9:6

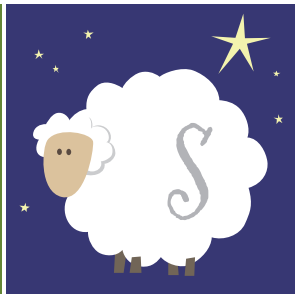
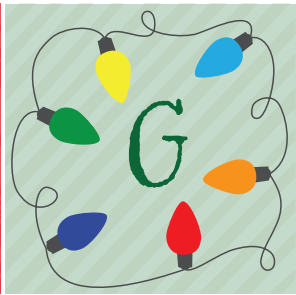
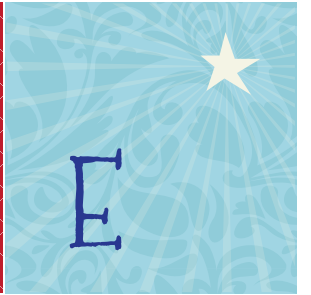
Merry Christmas



The Meaning of Christmas

Many Christmas decorations and traditions are symbols of Christ. Here is a challenging activity to figure out what descriptions below match the pictures of Christmas symbols and decorations on the next page. Write the letter of the Christmas decoration in the box next to its description.

- 1 ☐ Luke 2:8
- 2 ☐ D&C 110:3
- 3 ☐ A world blanketed in white from the Heavens symbolizes being made pure through Christ
- 4 ☐ Christ is the Light of the World
- 5 ☐ 3 Nephi 12:15
- 6 ☐ The Spirit of Christ gives warmth to the world
- 7 ☐ Joyous music symbolizes angels announcing Christ birth
- 8 ☐ Green in the dead of winter symbolizes hope and new life
- 9 ☐ 3 Nephi 1:21(19-21)
- 10 ☐ The prickly leaves symbolize the crown of thorns, and the red berries symbolize Christ's blood shed for us
- 11 ☐ Spreading worldwide joy, love, and selfless giving
- 12 ☐ Luke 2:10-11
- 13 ☐ A symbol of eternity
- 14 ☐ A replacement for apples that once hung from the tree, representing the Fruits of the Spirit
- 15 ☐ A hope to be filled with the gifts of Christ
- 16 ☐ Matthew 2:11 and John 3:16
- 17 ☐ Luke 2:7
- 18 ☐ Luke 2:19
- 19 ☐ Christ is the Good Shepherd, gently leading us and protecting us from predators
- 20 ☐ Purity intertwined with the blood of Christ





SIGNS OF JESUS' BIRTH

3 Перні 1



SIGNS OF THE BIRTH OF JESUS

3 Nephi 1

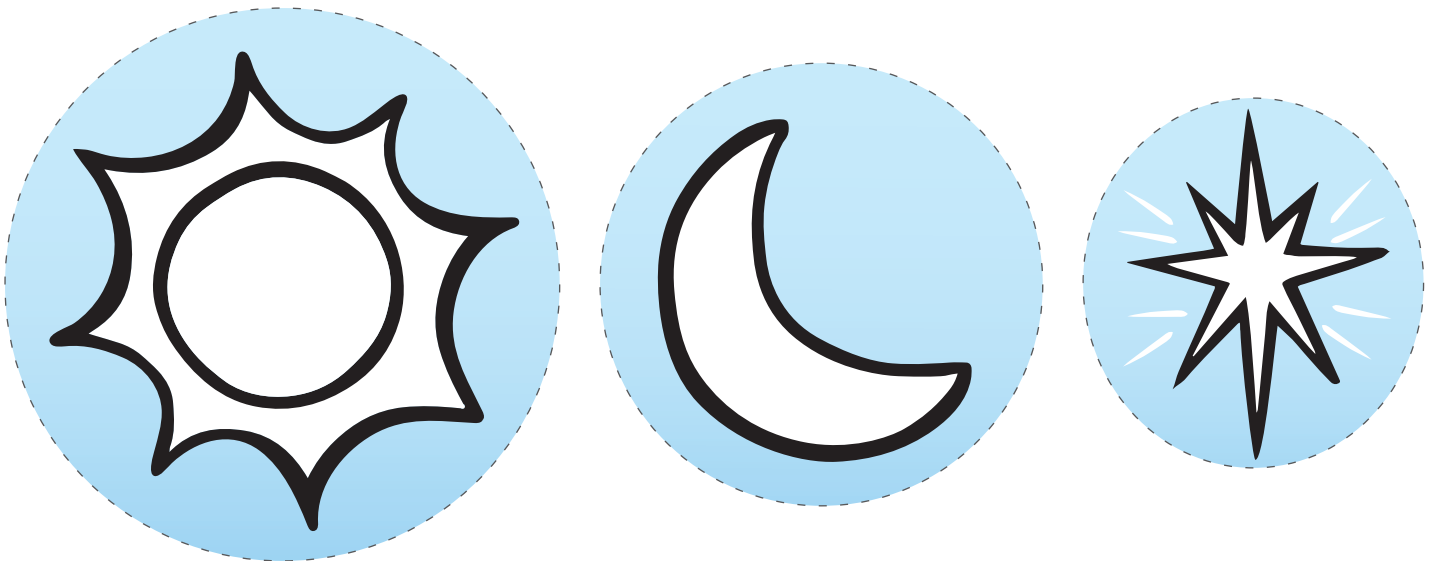
Those in the Americas who believed in Christ were anxiously awaiting the signs of His birth. They knew that He would be born in a different part of the world. But they were promised that they would know when He was born because of the signs they would see. One sign was that when the sun went down, it would still be light outside. The other sign was a new star, which was the same star that appeared to the people in Jerusalem.

For this activity, I colored the sky for you to show that the sky did not get dark when the sun went down. You can color the rest of the page.

With some scissors or a razor blade, you can make a slit in the picture, along the dotted line that is just above the mountains. Then cut out the sun, moon, and star below, along the dotted lines. Glue or tape the sun and moon onto popsicle sticks.

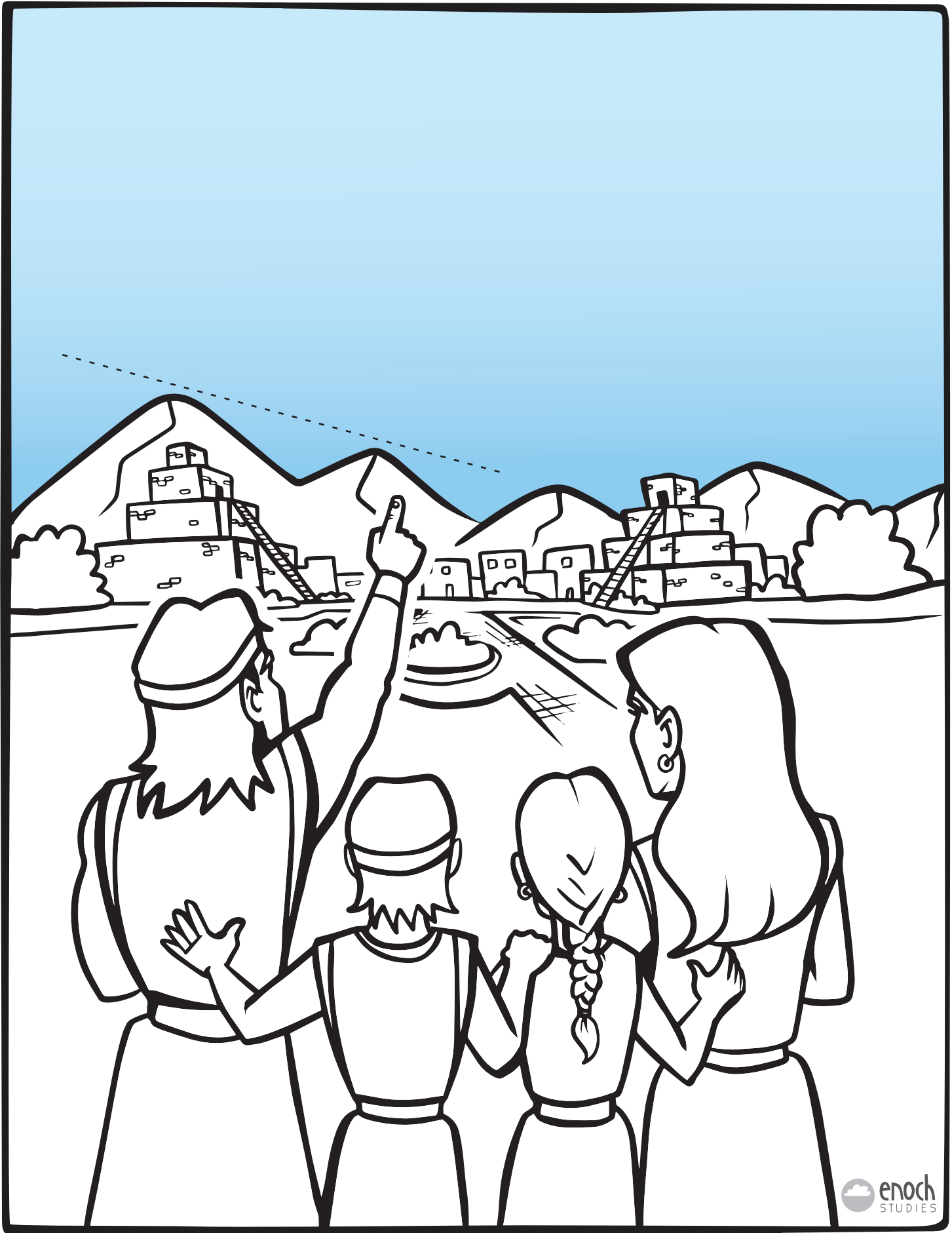
Open your scriptures and read in 3 Nephi chapter 1 about the signs they saw when Christ was born. As you read about the sun going down, you can slide the sun into that slit, showing that the sun is setting. You can then slide the moon up through the same slit showing that it is night, but the sky is still light. (If you want to you can put popsicle sticks on the sun and moon to make it a little easier to move them up and down through the slit.)

Then, as you read about the new star, take the star and glue it into the sky.



I included a coloring page for your kiddos who are too little to cut, glue, and use the popsicle sticks.

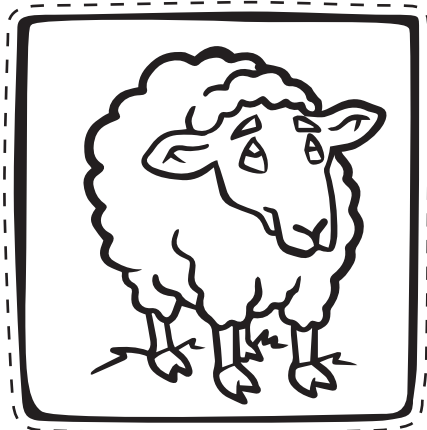
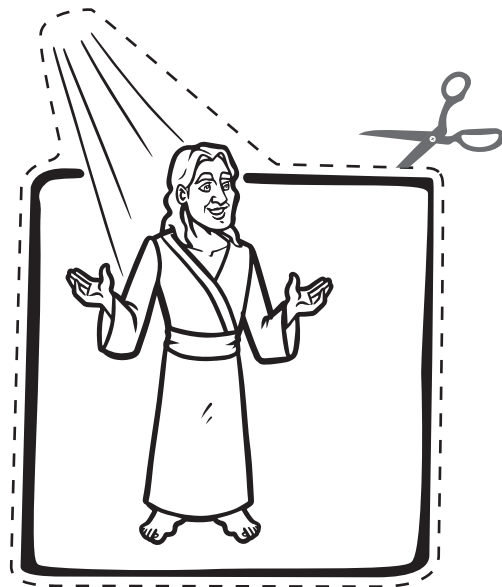
I also included a picture of Christ's birth in Bethlehem, to help connect that the signs they saw in the Americas were the same signs and events that were happening in Bethlehem.



THE SYMBOLS OF CHRIST'S BIRTH

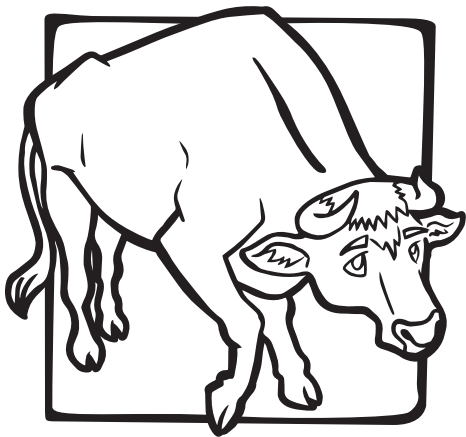
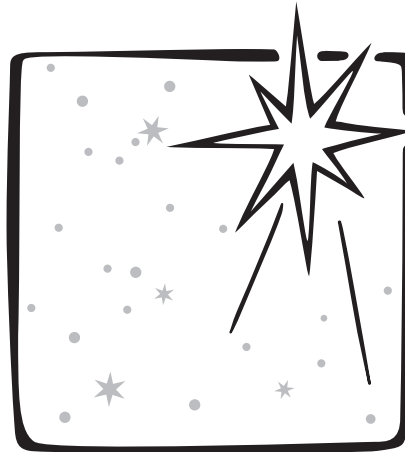
Matthew 2; Luke 2

When Luke and Matthew wrote about the birth of Jesus Christ, they added a lot of symbolism to the items and events that happened. With the few verses they dedicated to Christ's birth, they carefully chose to write about the things that added meaning to this sacred story. Cut out the symbolic items below and glue them on the correct place on the next page. Talk about what all the things might symbolize.



Angel

Those who point
people to Christ



Swaddling clothes

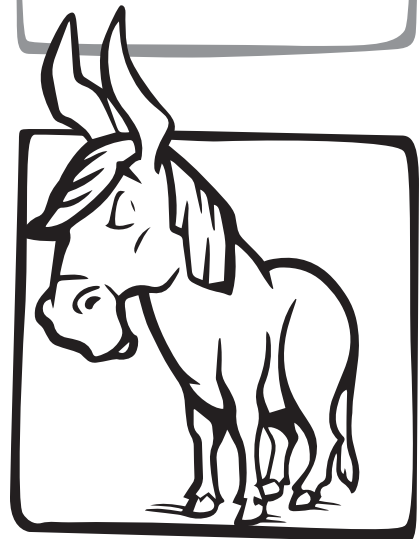
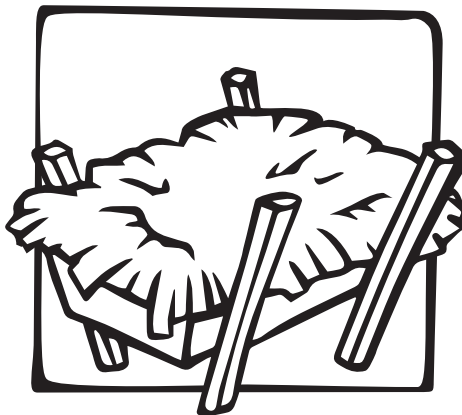
Ceremonial clothing,
like baptism clothing
and temple robes

Gold Frankincense & Myrrh

Spices and herbs
that symbolize
Christ's mission

Sheep

Sacrificial Lambs,
which are a
symbol of Christ.



The Symbols of Christ's Birth

Matthew 2; Luke 2

With Christmas just being a few weeks ago, I wanted to approach this lesson a little more academically. On the left are some items from the story of Christ's birth. On the right are the symbolic explanations. Draw a line from each item on the left to their explanation on the right.



The star

Angels

The donkey

The ox

Shepherds



Sheep

Wise men



Gold

Frankincense

Myrrh

Swaddling clothes



Simeon

Anna

Turtle doves

Sacrificial animals, which are a symbol of Christ.

Service to God. This animal alone it means Gentiles, or non-covenant people. When coupled with the Ox, it can mean both Gentiles and covenant people who serve and obey Christ.

Witnesses of Christ, telling others of His coming. Messengers from God, Anybody who testifies of Christ and points the way for others to find Him. Missionaries.

A symbol of divinity and a sign of royalty.

A symbol of strong followers of Christ. It can also be a symbol of Christ. It represents power, patience, and sacrifice.

Anything that leads us to Christ – the Holy Ghost, scriptures, words of the prophets, etc.

A highly fragrant spice burned as an offering to God. A symbol of Christ offering Himself up as a sacrifice to atone for us all.

Righteous people and cultures all around the world who are looking for the signs of Christ and seek Him out.

Wisdom clothing, the great high priest robes. Ceremonial clothing, like baptism clothing and temple robes.

Those who seek Christ and humbly follow Him. Those who lead His flock. Also, a symbol of Christ, who is the Good Shepherd.

A witness of fulfilled prophecy. Possibly the priest who gave baby's blessings, which may be why Mary and Joseph took baby Jesus to him.

A symbol of affection and timidity. (found in the Bible Dictionary). Could be used as a sacrifice in place of a lamb for those who could not afford a lamb, so it is also a symbol of Christ.

A prophetess of the tribe of Asher. The tribe of Asher's symbol was the olive tree. Olive oil, used in anointing, and was commonly used to anoint kings and sanctify them for the kingdom.

A spice used in embalming. It symbolizes bitterness, suffering, and affliction. A symbol of Christ being willing to suffer and die for us.



Christmas

Word Find

B	H	D	A	E	L	B	A	T	S	U	J	C	H	L	A	N	U	G
U	N	A	T	I	V	I	T	Y	D	I	V	H	O	D	I	B	E	L
N	U	T	C	R	A	C	K	E	R	O	F	I	B	O	U	K	L	O
I	L	H	Y	U	G	V	A	M	E	V	E	M	P	L	K	R	F	T
P	W	A	P	T	M	A	R	Y	H	J	O	N	C	B	W	I	B	L
G	S	L	E	Y	I	B	R	T	P	M	R	E	C	A	O	B	E	I
E	F	L	A	N	P	N	K	L	E	C	Y	Y	U	L	N	E	C	S
A	O	E	E	R	T	O	S	A	H	L	S	R	I	L	S	D	L	E
S	B	L	B	A	B	Y	J	E	S	U	S	C	R	B	E	L	L	S
N	E	U	N	E	B	L	K	T	L	W	A	B	V	H	C	E	I	E
O	G	J	L	I	W	E	P	L	W	L	M	I	P	K	G	B	G	I
I	I	A	Y	M	C	I	T	C	Y	I	T	R	C	N	P	A	H	F
T	N	H	J	O	S	E	P	H	U	G	S	T	A	R	E	W	T	R
A	G	A	H	R	M	S	A	E	L	P	I	Y	R	E	N	R	S	A
R	E	T	O	E	A	P	I	J	E	E	R	V	D	A	I	A	L	N
O	R	H	T	M	N	E	B	S	T	V	H	O	S	C	N	P	C	K
C	B	N	C	C	G	G	A	E	I	C	C	E	B	E	B	P	I	I
E	R	U	O	A	E	G	O	L	D	T	Y	H	M	A	C	I	N	N
D	E	G	C	N	R	N	P	P	E	W	R	E	A	T	H	N	N	C
P	A	I	O	D	E	O	T	E	L	T	S	I	M	N	T	G	A	E
U	D	F	A	Y	P	G	L	M	U	I	N	A	L	Y	I	P	M	N
S	O	T	T	C	L	E	N	I	W	R	R	P	N	A	N	A	O	S
M	N	S	N	A	T	R	E	I	N	D	E	E	R	T	U	P	N	E
A	W	O	C	N	U	A	N	A	U	G	H	T	Y	E	A	E	H	A
C	E	D	W	E	A	B	S	C	L	O	L	Y	H	U	T	R	J	N
I	P	O	M	M	E	S	G	N	I	K	C	O	T	S	K	T	A	W
Y	N	E	R	L	A	H	L	O	R	N	A	M	E	N	T	S	P	L
D	T	C	O	R	W	N	B	P	U	E	L	O	P	H	T	R	O	N

CHRISTMAS
BABY JESUS
STAR
SHEPHERDS
BETHLEHEM
WISE MEN
JOSEPH
MARY
STABLE
MANGER
LIGHTS
HALLELUJAH
TREE
WREATH
SNOW
GIFTS
CAROLING
SANTA
REINDEER
STOCKINGS
BELLS
CANDLE
CANDY CANE
DECORATIONS
COOKIES
CHIMNEY
ELF
EVE
CARDS
SNOWMAN
GINGERBREAD
CINNAMON
HOT COCOA
MISTLETOE
GOLD
FRANKINCENSE
MYRRH
NUTCRACKER
NATIVITY
NAUGHTY
NICE
NORTH POLE
ORNAMENTS
TINSEL
WRAPPING PAPER
YULETIDE
EGGNOG